



SOIL ANALYSIS

When submitting soil samples, please identify each sample with a maximum of 6 letters/numbers along with the type of test desired. If fertilizer recommendations are requested, please list the crop and attainable yield goal.

		<u>Price/Sample</u>	
		*WITH	WITHOUT
<u>BASIC SOIL TEST PACKAGES</u>		Recommendations	
Basic Test S1A:	Organic Matter, Available Phosphorus (P1 Weak & P2 Strong Bray Phosphorus), Exchangeable Potassium, Magnesium, Calcium, Soil pH, Buffer pH, calculated Cation Exchange Capacity, and Percent Cation Saturation, Nitrate-Nitrogen ...	\$12.60	** \$10.80
Basic Test S1B:	Same as S1A, except Sodium Bicarbonate Phosphorus (For P1 reporting add \$1.00)	\$14.60	** \$12.80
Basic Test S2:	Basic S1A or S1B plus Sodium, Soluble Salts, Excess Lime	\$15.60	** \$13.80
**NOTE:	If NO Nitrate-Nitrogen test is desired, please indicate on Soil Information Sheet and deduct	\$ 4.00	** \$ 3.40

SULFUR AND MICRONUTRIENT TEST PACKAGES

Basic Test S3:	Sulfate Sulfur, Zinc, Manganese, Iron, Copper, and Boron	\$12.60	\$11.60
Basic Test S4:	Zinc, Manganese, Iron and Copper	\$ 8.40	\$ 7.40
Basic Test S5:	Sulfate Sulfur and Zinc	\$ 6.30	\$ 5.30
Basic Test S5A:	Boron and Zinc.	\$ 6.30	\$ 5.30
Basic Test S6:	Sulfate Sulfur, Zinc, Manganese, and Boron	\$11.60	\$10.60
Basic Test S7:	Sulfate Sulfur, Zinc and Boron	\$ 9.60	\$ 8.60

*Recommendations include up to two crops or yields. Additional recommendations available	Each	\$ 2.00
Recommendations made from old Report	Each	\$ 8.00
Archive retrieval (for reports over one year old)	Each	\$ 5.00
Graphical Report	Each	\$ 0.50
Mehlich III Phosphorus extraction (per sample)	Each	\$ 1.50

CONTAINER AND GREENHOUSE MIX TESTS by Saturated Paste Extract (One Quart of sample is required)

Basic Test S8:	pH, Conductivity, Ammonia-Nitrogen, Nitrate-Nitrogen, Phosphorus, Potassium Magnesium, Calcium, Sodium, and Sulfur	\$38.50
Basic Test 8A:	Test S8 plus Aluminum, Manganese, Iron, Copper, Zinc, and Boron	\$44.00
Basic Test S8B:	DTPA Extraction of Manganese, Iron, Copper, Zinc, and Boron	\$27.50

INDIVIDUAL ANALYSIS OF EXTRACTABLE SOIL NUTRIENTS

Zinc, Manganese, Iron, Copper (Per Element)	\$ 2.80	\$ 2.40
Boron, Sulfate Sulfur	\$ 4.00	\$ 3.60
Sodium, Potassium, Magnesium, Calcium, P1, P2, Bicarbonate, Mehlich III Phosphorus(Per Element)	\$ 5.00	\$ 4.60
Molybdenum	\$26.00	\$25.00
Nitrate-Nitrogen	\$ 6.00	\$ 5.00
Ammonia-Nitrogen		\$15.00
Chloride		\$18.00

SOIL ANALYSIS



ADDITIONAL SOIL CHEMICAL ANALYSIS

Price/Sample

Aluminum (Acid Ammonium Acetate Extractable)	\$12.00
Aluminum (Exchangeable—1N KCl extracted)	\$12.00
Acid - Base Accounting (From Total Sulfur and Neutralization Potential)	\$50.00
Atrazine (by Immunoassay)	\$70.00
Base Saturation Percentage (Black) Includes Total Cation Exchange Capacity	\$42.00
Cation Exchange Capacity Total (Total - by Ammonium Acetate Saturation)	\$30.00
Composite Sample Preparation	\$ 7.00
Conductivity (Saturated Paste)	\$15.00
Conductivity (Soluble Salts - 1:2 Soil : Water)	\$10.00
ESP (Includes Ammonium Acetate extractable Sodium und Soluble Sodium from	
Saturated Paste Extract. Total Cation Exchange Capacity also required)	\$54.00
Heavy Metals (e.g. Arsenic, Cadmium, Chromium, etc)	See Metal Analysis on Page 10
Humic Acid	\$44.00
Moisture	\$10.00
Neutralization Potential	\$19.00
Nitrogen - Inorganic	\$20.00
Nitrogen - Total (T.K.N.)	\$25.00
Oil Contamination	\$35.00
Organic Carbon	\$50.00
Organic Matter - Colorimetric	\$ 8.00
Organic Matter - by Combustion	\$ 8.00
Organic Matter - by Titration	\$33.00
pH (1:1 Soil : Water)	\$ 6.00
pH (Saturated Paste)	\$12.00
Phosphorus - Total	\$20.00
SAR (Saturated Paste Extract - Includes Soluble Cations and Saturation Percentage)	\$44.00
SAR (1:1 Extract)	\$36.00

SOIL PHYSICAL MEASUREMENTS

Bulk Density (Disturbed Soil)	\$12.00
Particle Size Analysis - Hydrometer Method (Percent Sand, Silt, Clay and Textural Classification) ..	\$17.50

SLUDGE LAND APPLICATION PACKAGE

Basic Text M4	\$220.00			
Total Nitrogen	Ammonia Nitrogen	pH	Lead	Nickel
Total Phosphorus	Organic Nitrogen	Total Solids	Cadmium	Copper
Total Potassium	Nitrate Nitrogen	Total Volatile Solids		Zinc

NEMATODE ASSAY (A separate, full sample bag needed and soil must be moist when sampled)

Complete Parasitic Nematode Analysis	\$33.00
--	---------

SITE SPECIFIC SOIL ANALYSIS PACKAGES AVAILABLE

Inquire

Please call lab for available analyses and pricing.

PLANT ANALYSIS



Discounts are available for samples which are submitted dried and ground. Inquire for prices.

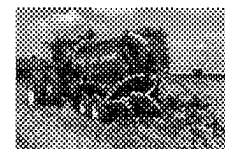
PLANT ANALYSIS TEST PACKAGE

	<u>Price/Sample</u>	
	<u>With Interpretations</u>	<u>Without Interpretations</u>
Basic Test PT1: Phosphorus, Potassium, Magnesium, Calcium, Sodium, Iron, Aluminum, Manganese, Boron, Copper, Zinc . . .	\$19.60	\$15.60
Basic Test PT2: Test PT1 plus Nitrogen AND Sulfur	\$24.60	\$22.20
Basic Test PT3: Test PT1 plus Nitrogen or Sulfur	\$22.40	\$19.00
Basic Test PT4: Nitrogen, Phosphorus and Potassium	\$17.00	\$15.60
Basic Test PT4a: Nitrate-Nitrogen, Phosphorus, Potassium (PETIOLES)	\$17.00	\$15.60
Individual Analysis (per Element)		\$15.00
Chloride		\$18.00
Nitrate-Nitrogen		\$12.00
Heavy metals (e.g. Arsenic, Cadmium, Chromium, etc.)	See Metal Analysis on page 10	

A sample preparation fee of \$10.00 will be added for all plant tissues samples that need to be washed or prepped.

DO NOT SUBMIT PLANT SAMPLES IN PLASTIC BAGS!

MANURE ANALYSIS



!WARNING!

Do NOT ship manure samples in glass containers or fill containers more than 1/4 full of gas producing manures.

MANURE TEST PACKAGES

Basic Test M1:	Moisture, Total Nitrogen, Phosphorus, and Potassium	\$33.00
Basic Test M2:	Test M1 plus Sulfur, Calcium, Magnesium, Sodium, Iron, Aluminum, Manganese, Copper and Zinc	\$49.50
Basic Test M3:	Basic Test M2 plus Cadmium, Chromium, Lead and Nickel . . .	\$77.00
Effluent Manure:	(For Liquid Manure, Waste Waters, Lagoon) Total Nitrogen, Phosphorus, Potassium, Sulfur, Calcium, Magnesium, Sodium, Iron, Aluminum, Manganese, Copper, Zinc, pH and Electrical Conductivity	\$49.50

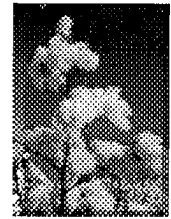
ELEMENTAL ANALYSIS

Phosphorus, Potassium, Sulfur, Magnesium, Calcium, Sodium, Iron, Aluminum, Manganese, Copper, Zinc, Cadmium, Cobalt, Lead, Molybdenum, Nickel *each element* \$18.00

INDIVIDUAL ANALYSIS

Ash	\$12.00	Boron	\$18.00
Moisture (Oven 110 c)	\$10.00	C:N Ratio	\$44.00

OILSEED ANALYSIS



(DISCOUNTS NOT AVAILABLE)

COTTONSEED

Price/Sample

Basic Test C-1:	Oilmill Grade (USDA recognized cottonseed chemist) Foreign Matter, Moisture, Free Fatty Acid, Oil Content, Ammonia, Quality Index Deduction, Quantity Index, GRADE	\$29.50
Basic Test C-2:	Basic C-1 PLUS Lint	\$33.00
Basic Test C-3:	Free Fatty Acid	\$17.00
Basic Test C-4:	Oil	\$21.00

PEANUTS

Basic Test P-1:	Moisture, Oil, Protein, Free Fatty Acid	\$25.00
------------------------	---	---------

SOYBEANS

Basic Test SB-1:	Moisture, Oil, Protein	\$24.00
Basic Test SB-2:	Moisture, Oil, Protein, Crude Fiber	\$49.50

CRUDE EDIBLE OILS (*Cottonseed, Sunflower, Corn, Soybean, Peanut*)

Basic Test O-2:	Moisture and Volatile Matter	\$18.00
Basic Test O-4:	Total Fatty Acid	\$33.00

OIL MILL CONTROL SAMPLES

Basic Test CU-1:	Protein, Oil, Moisture	\$19.50
Basic Test CU-1A:	Moisture, Oil (Spent Pellets/Hull)	\$17.00
Basic Test CU-2:	Hulls (Includes percent meats, whole seed, hull oil and cleaned hull oil)	\$19.50
Basic Test CU-3:	Black Seed (residual Lint)	\$19.50
Basic Test CU4:	Crude Fiber	\$19.50
Basic Test CU5:	Protein Only	\$13.00
Basic Test CU6:	Dust Oil	\$11.50

OFFICAL SAMPLES (REFEREE)

Basic Test CO-1:	Protein, Oil, Moisture	\$22.50
Basic Test CO-2:	Protein, Moisture	\$20.00
Basic Test CO-3:	Protein only	\$16.00

SUNFLOWER SEED

Basic Test SF-1:	Foreign Matter, Oil, Moisture (NCPA, NIOP, or AOCS rules)	\$22.00
Basic Test SF-2:	Moisture, Oil (as received, NIOP rules)	\$19.80
Basic Test SF-3:	Foreign Matter only	\$18.00
Basic Test SF-4:	Oil only	\$18.50

Composite fee for bulk samples (per sample group) \$10.00

FERTILIZER AND LIME ANALYSIS



When submitting fertilizer samples, please indicate the estimated % of nutrients expected. AOAC methods are used where applicable.

FERTILIZER TEST PACKAGES

Price/Sample

Total Nitrogen (N), Total Phosphorus (P ₂ O ₅), and Potassium (K ₂ O)	\$55.00
Total Nitrogen (N), and available Phosphorus (P ₂ O ₅)	\$44.00
Total Nitrogen (N), available Phosphorus (P ₂ O ₅), and Potassium (K ₂ O)	\$57.00

BASIC TEST W2N: Nutrient Solutions (for water containing fertilizer. Please specify expected levels.)

Nitrate and Ammonia Nitrogen, Phosphorus, and Potassium	\$60.00
---	---------

ELEMENTAL ANALYSIS

Aluminum, Calcium, Chromium, Cobalt, Copper, Iron, Magnesium, Manganese, Molybdenum, Nickel, Sodium, and Zinc.

One of the Above	\$18.00	Two of the Above	\$30.00	Each Additional	\$12.00
------------------------	---------	------------------------	---------	-----------------------	---------

INDIVIDUAL ANALYSIS

Acid Insolubles	\$10.00	N-Phuric test	\$20.00
Biuret	\$30.00	pH	\$ 6.00
Boron	\$18.00	Phosphorus - Total	\$18.00
Brix (%Sugar as)	\$12.00	Phosphorus (P ₂ O ₅) - Available (<i>citrate soluble</i>)	\$27.00
Chloride	\$15.00	Phosphorus (P ₂ O ₅) - Ortho	\$18.00
Fluoride	\$20.00	Phosphorus (P ₂ O ₅) - Poly (Non-Ortho) requires Total P ₂ O ₅	\$37.00
Free Acid	\$10.00	Phosphorus (P ₂ O ₅) - Water Soluble	\$19.00
Free Ammonia	\$10.00	Potassium (K ₂ O)	\$25.00
Insoluble Solids	\$10.00	Specific Gravity	\$10.00
Moisture (110°) (Dry Sample Only)	\$10.00	Silica (SiO ₂)	\$30.00
Nitrogen - Ammonia	\$15.00	Sulfur (Elemental)	\$40.00
Nitrogen - Nitrate	\$15.00	Sulfur - Sulfate	\$28.00
Nitrogen - Total	\$20.00	Sulfur - Total	\$23.00
Nitrogen - Urea	\$30.00	Total Acidity	\$15.00
Nitrogen - Organic	\$35.00	Zinc - Water Soluble	\$20.00
Nitrogen - Water Soluble	\$25.00	Zinc - EDTA	\$25.00
Nitrogen - Water Insoluble	\$25.00		

LIMESTONE MATERIALS

Calcium, Magnesium, Total Neutralizing Value	\$33.00
Calcium and Magnesium Content	\$22.00
Moisture	\$10.00
Sieve Analysis Per Screen Size (please specify screen size)	\$12.00
100 or 325 mesh	\$18.00
Total Neutralizing Value (CaCO ₃) Equivalent)	\$18.00

Effective Calcium Carbonate Determination: CCE, Moisture, 8, 20, 40, 60, and 100 mesh sieves .. \$66.00

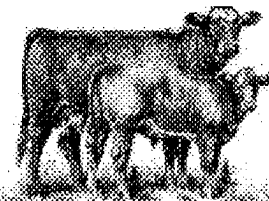
Relative Neutralizing Value: CCE, Moisture, 10, 40, 60 mesh sieves .. \$55.00

Limestone Elemental Analysis: Calcium, Sulfate Sulfur, Boron, Phosphorus, Potassium, Aluminum, Sodium, Zinc, Iron, Magnesium, Manganese, and Copper .. \$55.00

Flue Dust or High Potassium Lime: Calcium, Sulfate Sulfur, Boron, Phosphorus, Potassium, Aluminum, Sodium, Zinc, Iron, Magnesium, Manganese, and Copper .. \$60.00

A sample preparation fee of \$10.00 will be added for all dry fertilizer products, suspensions, and limestone requiring preparation.

FEED ANALYSIS



BASIC FEED TEST PACKAGES

	<u>Price/Sample</u>
Basic Test F2A: Moisture, Crude Protein, Crude Fat, Acid Detergent Fiber, TDN, Net Energy, Ash	\$27.50
Basic Test F2B: Test F2A plus Acid Detergent Insoluble Protein	\$35.00
Basic Test F3: (Mineral Analysis) Phosphorus, Potassium, Magnesium, Calcium, Sodium, Iron, Manganese, Sulfur, Copper, Zinc	\$24.00
Basic Test F4: Moisture and Crude Protein	\$15.00
Basic Test F4A: Moisture and Nitrate	\$15.00
Basic Test F5: Moisture, Crude Protein, Calcium, Phosphorus	\$23.00
Basic Test F6: Moisture, Crude Protein, Acid Detergent Fiber, Calculated TDN, Net Energy, Calcium, Phosphorus, Potassium, Magnesium, Sulfur	\$31.50
Basic Test F6A: Moisture, Crude Protein, ADF, NDF, TDN, Relative Feed Value	\$27.50
Basic Test F7: Moisture, Crude Protein, Acid Detergent Fiber, TDN, Net Energy	\$22.00
Basic Test F8: Moisture, Crude Protein, Acid Detergent Fiber, TDN, Net Energy, Calcium, Phosphorus	\$27.50
Basic Test F9: Moisture, Crude Protein, Crude Fat, Crude Fiber	\$22.00

INDIVIDUAL FEED ANALYSIS

Acid Detergent Insoluble Protein	\$22.00	Moisture in Meat	\$25.00
Aflatoxins (Quantitative)	\$50.00	Non-Protein Nitrogen (Urea and Ammonia)	\$24.00
Ammonia	\$12.00	Peroxide Value	\$20.00
Ash	\$10.00	pH	\$ 6.00
Calcium	\$18.00	Phosphorus	\$18.00
Calcium and Phosphorus	\$20.00	Protein, Pepsin Digestible (includes Crude Protein)	\$25.00
Chloride	\$18.00	Protein, Pepsin Digestible (w/Tests F2,F4 thru F9)	\$15.00
Fat in Meat	\$30.00	Prussic Acid (Cyanide)	\$25.00
Fat, Crude	\$12.00	Salt	\$18.00
Fat, by Acid Hydrolysis	\$27.00	Selenium	\$48.00
Fiber, Crude	\$15.00	Sulfur	\$15.00
Fiber, Neutral Detergent or Acid Detergent	\$21.00	Tannin	\$20.00
Fluoride	\$30.00	Urea	\$30.00
Iodide	\$33.00	Urease Activity	\$30.00
Lignin	\$40.00		
Moisture (Oven 110°)	\$10.00		

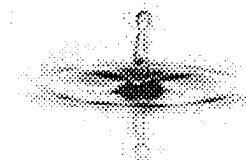
LIQUID FEED ANALYSIS

Free Fatty Acid (Rancidity)	\$20.00
Moisture (Toluene Distillation)	\$17.00
Moisture (Toluene Distillation) and Protein	\$27.00
Non-Protein Nitrogen (as Urea)	\$30.00

MINERAL ANALYSIS - SUPPLEMENTS AND PREMIXES

Phosphorus, Calcium, Magnesium, Potassium, Sodium, Iron, Copper, Manganese, Zinc	
Each Element	\$18.00
All of the above	\$60.00
Boron	\$27.50
Aluminum	\$18.00
Sulfur (Gravimetric)	\$30.00
Selenium	\$48.00
Sample preparation fee required for all Mineral Analysis - Supplements and Premixes	\$10.00

WATER ANALYSIS



BASIC WATER TEST PACKAGES

Price/Sample

Livestock Suitability

Basic Test W1: Sodium, Calcium, Magnesium, Chloride, Conductivity, Total Dissolved Solids, Sulfate, Nitrate, and pH	\$29.50
Basic Test W1A: Basic Test W1 plus Iron and Copper	\$40.50

(One quart of sample in a clean, plastic container is required)

Irrigation Suitability:

Basic Test W2: Sodium, Calcium, Magnesium, Chloride, Conductivity, Sulfate, Nitrate, pH, Carbonate, Bicarbonate, Phosphorus, Potassium, Total Dissolved Solids, SAR, and Boron	\$49.00
Basic Test W2A: Basic Test W2 plus Copper, Iron, Manganese, and Zinc.	\$74.00

(One quart of sample in a clean, plastic container is required)

Nutrient Solutions Test - For Water Containing Added Fertilizer

Basic Test W2N: Nitrate-Nitrogen, Ammonia-Nitrogen, Phosphorus, and Potassium	\$60.00
--	---------

*(Minimum of one quart of sample in a clean, plastic container is required.
Estimates of % N-P-K must be included with sample.)*

Domestic Suitability - For Home Drinking Water

Basic Test W3: Purity (Total Coliform), Nitrate, Calcium, Magnesium, pH, Total Hardness, Conductivity, and Total Dissolved Solids	\$38.50
Basic Test W3A: Basic Test W3 plus Copper, Iron, Manganese and Zinc	\$60.00

This test require sterile bottles, refrigeration and 24 hour delivery to the laboratory for reliable results.

**Samples MUST be received in the laboratory Monday through Thursday.
Weekend surcharge applies for sample received/submitted on Fridays!**

(Two separate sample containers are required. Contact laboratory for additional instructions.)

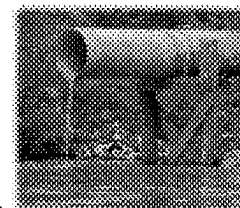
Fish Pond Suitability

Basic Test W4: Dissolved Oxygen, pH, Nitrite-Nitrate Nitrogen, Ammonia-Nitrogen, Chloride . . .	\$35.00
--	---------

**This test requires refrigeration and 24 hour delivery to the laboratory for best results.
Samples MUST be received in the laboratory Monday through Thursday.
(Requires one quart of sample filled to the top of container so that there is no airspace left.)**

Proper sampling methods and containers are essential for accurate analysis.
If you have any questions concerning correct sampling procedures and containers,
please contact the laboratory before submitting samples.

WATER AND WASTEWATER ANALYSIS



INDIVIDUAL ANALYSIS

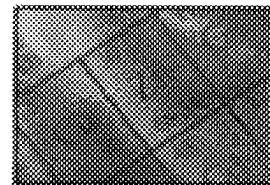
	<u>Method</u>	<u>Price/Sample</u>
Acidity, Total	2310	\$10.00
Alkalinity, Total	2320 B	\$10.00
BOD (Biochemical Oxygen Demand) - 5 Day		
Received on Monday or Friday	5210 B	\$40.00
Received on Tuesday, Wednesday or Thursday	5210 B	\$25.00
Boron		\$10.00
COD (Chemical Oxygen Demand)	5220 D	\$25.00
COD by Reflux	5220 C	\$30.00
Chloride	4500 Cl B	\$12.00
Chlorine, Residual		\$25.00
Coliform, Fecal (Membrane Filter)	9222 D	\$25.00*
Coliform, Total (Membrane Filter)	9222 B	\$25.00*
Conductance (Specific)	2510 B	\$10.00
Dissolved Oxygen	4500 O G	\$10.00
Fluoride (No Distillation)	4500 F C	\$20.00
Hardness, Total	2340 B	\$24.00
Metals (Cadmium, Lead, etc.)		See Metal Analysis
N-phuric (Titration)		\$20.00
Nitrogen-Ammonia	4500NH3 E	\$13.00
Nitrogen-Nitrate	4500NO3 E	\$15.00
Nitrogen-Nitrite	4500NO2 E	\$15.00
Nitrogen-Nitrate & Nitrite	4500NO3 E	\$25.00
Nitrogen-Organic	4500Norg B	\$32.00
Nitrogen-Total (TKN)	4500Norg B	\$20.00
Oil and Grease	5520 D	\$55.00
pH	4500 H B	\$ 6.00
Phosphorus, Ortho	4500 P E	\$15.00
Phosphorus, Total	4599 O E	\$20.00
SAR	Flame AA	\$25.00
Silica (SiO ₂)	4500 Si D	\$25.00
Solids-Dissolved	2540 C	\$12.00
Solids-Settleable	2540 F	\$10.00
Solids-Suspended	2540 D	\$12.00
Solids-Total	2540 B	\$12.00
Solids-Volatile	2540 E	\$12.00
Specific Gravity	4500 SO4 E	\$15.00
Total Petroleum Hydrocarbons (TPH)	418.1 or 1005	Call

*** Requires sterile bottle, refrigeration, and 24 hour delivery to the lab. Samples must be received Monday through Thursday.**

***** Volume discounts are available. Please contact the laboratory for specific information.**

Laboratory Reference Methods:
 Methods for Chemical Analysis of Water and Wastes, EPA-600/4-79-0200,1983
 Standard Methods for Examination of Water and Wastewaters
 Test Methods for Evaluating Solid Waste, EPA-SW-846-1986

METAL ANALYSIS



Instrumentation

<u>Metal</u>	<u>Flame AA</u>		<u>Hydride</u>
Aluminum	\$18.00		
Arsenic			\$48.00
Cadmium	\$18.00	HMCDH	\$36.00
Calcium	\$18.00		
Cobalt	\$18.00		
Copper	\$18.00		
Chromium	\$18.00		
Iron	\$18.00		
Lead (Liquid)		GC	\$35.00
Lead (Solids - requires digest)		GC	\$45.00
Magnesium	\$18.00		
Manganese	\$18.00		
Mercury *			\$48.00
Molybdenum	\$25.00		
Nickel	\$18.00		
Potassium	\$18.00		
Selenium			\$48.00
Sodium	\$18.00		
Zinc	\$18.00		
Additional metals not listed	INQUIRE		
Graphite Furnace Determination	By REQUEST		INQUIRE

INSTRUMENTATION

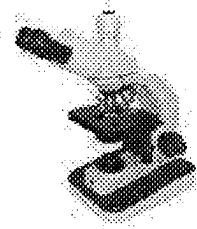
Flame AA	Flame Atomic Absorption
Graphite Furnace	Carbon Rod Atomizer
Hydride	Hydride Generator with AA detection

*Mercury is analyzed by Cold Vapor with AA detection.

Laboratory Reference Methods:

Water and Wastewater - Methods for Chemical Analysis of Water and Wastes, EPA 600/4-79-020, 1983
 Sludge and Solids - Test Methods for Evaluation Solid Waste, EPA-SW 846, 1986

MICROBIOLOGY



WATER

Price/Sample

Coliform, Fecal (membrane Filter)	\$25.00
Coliform, Total (membrane Filter)	\$25.00
E.Coli and Total Coliform (same sample, same time)	\$30.00
Enterococci	\$35.00
Fecal Streptococcus Plate Count	\$25.00
Standard Plate Count (aerobic)	\$25.00
Standard Plate Count (anaerobic)	\$25.00
Staphylococcus Aureus MPN (presumptive)	\$25.00
Staphylococcus Aureus - Coagulase Positive	\$50.00
Sulfite Reducing Bacteria	\$45.00

FOOD

Coliform, Fecal (membrane Filter)	\$25.00
E.Coli Plate Count	\$25.00
E.Coli (Sponge method) (Bio plate)	\$25.00
Lactobacillus	\$35.00
Listeria	\$40.00
Mold and Yeast Count	\$25.00
Salmonella Screen (presumptive)	\$36.00
Standard Plate Count (aerobic)	\$25.00
Standard Plate Count (anaerobic)	\$25.00
Staphylococcus Aureus MPN (presumptive)	\$25.00
Staphylococcus Aureus - Coagulase Positive	\$50.00
Sulfite Reducing Bacteria	\$45.00
Shelf-Life Study	INQUIRE

FEED

Mycotoxins:

Aflatoxin (Quantitative)	\$50.00
Fumonisin (Quantitative)	\$50.00
Vomitoxin (DON) (Screen)	\$50.00
Zearalenone (F2) (Screen)	\$50.00
T-2 (Screen)	\$50.00
Ochratoxin	\$50.00

All of the above Mycotoxins	280.00
Yeast and Mold Count	\$25.00
Salmonella Screen (presumptive)	\$36.00
Standard Plate Count (aerobic)	\$25.00
Standard Plate Count (anaerobic)	\$25.00

Other microbiological services available	INQUIRE
Consultation service	INQUIRE
Sample preparation fee -uniform sample-	\$ 5.00
Weekend Fee	\$15.00

All Microbiology samples must be received in the laboratory Monday through Thursday before 3 p.m., otherwise subject to weekend fee.

**Volume discounts may be available. Please contact the laboratory for specific information.